



GRANTLEY HALL

CIRCULAR WALK VIA *Fountains Abbey*



Approximate distance - 50 minutes each way.
Allow additional time to explore Fountains Abbey
National Trust Site (admissions apply).

Level/Terrain - Easy to moderate.
Wellington boots or hiking shoes required as path
can be muddy in areas.

OS Map - OS Explorer Map 99 - Northallerton & Ripon



GRANTLEY HALL

↑ TO RIPON



Walking Route



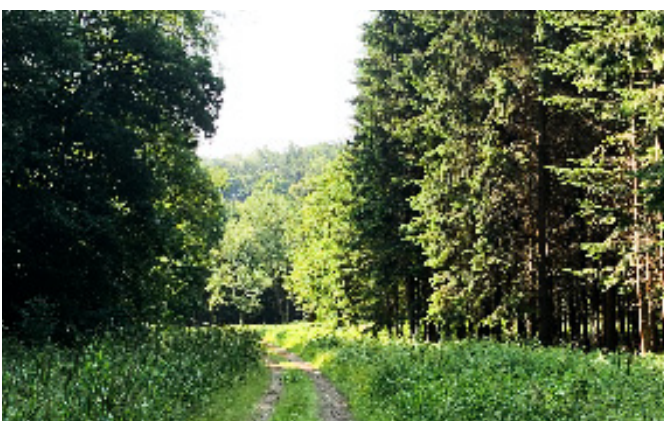
1. Walk from the Hotel Reception down the driveway along the River Skell to East Lodge and the main entrance gates to the Grantley Hall estate



2. Leaving from the Grantley Hall Estate out of East lodge you will turn left and walk alongside the road, take care crossing the road and walk approximately 50 yards



3. On your right-hand side you will see a double gate, climb over the stile and follow the bridle path for approximately 2 miles



4. As you walk along the bridle path with the River Skell on your right you will pass an old derelict cottage





5. Stay on the bridle path and go over another stile at the old stone bridge



6. The bridle path climbs gently towards another gate and stile



7. Walk down the road approximately 100 yards & you will see the entrance to Fountains Abbey & Studley Royal



8. Go through the West Entrance Gate to Fountains Abbey & Studley Royal

To return to Grantley Hall, retrace your steps as above.

